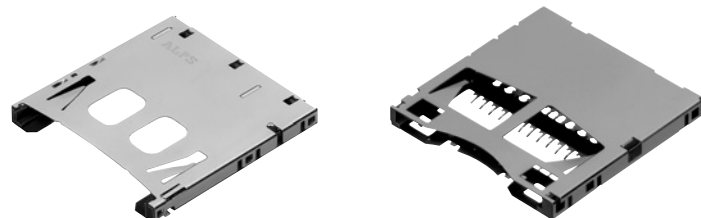


# Connector for SD Memory Card

## SCDA Series

A highly reliable contact structure makes a thickness of only 2.75 mm possible.



### Features

- To defend from loss when memory card was ejected, half-lock structure is adopted.
- Media detection switch adopts highly reliable contact structure with sliding at ON/OFF. Media detection switch surely detects timing when media are inserted.
- Available for both SD Memory Card and MultiMediaCard™.
- Compact size and low-profile.

### Applications

- Mobile phone, personal computers, digital cameras, digital camcorders, personal digital assistants and etc.
- Home audio and visual equipment (TV, set top box and etc.)

### Typical Specifications

Items		Specifications
Structure	Applicable media	SD Memory Card / MultiMediaCard™
	Mounting method	Surface mounting type
	Mounting system	Standard / Reverse mount
	Media ejection structure	Push-push type / Header type
Performance	Operating temperature range	−25°C to +60°C
	Voltage proof	500V AC 1minute
	Insulation resistance(Initial)	1,000MΩ min.
	Contact resistance(Initial)	100mΩ max.
	Mating and unmating cycle	10,000 cycles

## Products List

Media ejection structure	Mounting system	Features	Compatible with SD I/O	Stand-off (mm)	Packing system	Product No.	Drawing No.
Push-push type	Standard mount	—	○	0	Taping	SCDA1A0900	1
				1.2	Tray	SCDA1A0901	1
				1.5		SCDA1A0801	2
				1.8		SCDA1A1401	3
				2.3		SCDA1A1501	4
	Reverse mount	—	○	−0.8	Taping	SCDA1A0703	6
				0	Tray	SCDA1A0704	6
				1.8	Taping	SCDA2A0300	7
	Standard mount Inner tail type	Without frame legs	—	0	Taping	SCDA2A0201	8
		With frame				SCDA3A0102	9
		With shutter			Tray	SCDA3A0202	10
		Slim type				SCDA3B0201	11
Manual couple/decouple type	Standard mount	Header type	—	0	Taping	SCDA4A0100	12
						SCDA3C0102	13

Connector for  
SD Memory Card

Connector for  
TransFlash™  
Card

Connector for  
miniSD™ Card

Connector for  
RS-MMC™

Connector for  
Memory Stick Duo™

Connector for  
Memory Stick™

Combine  
Type  
Connectors

Connector for  
Compact Flash™  
Card

IC Card  
Connectors

PC Card  
Connectors

Connector for  
CMOS Camera  
Module

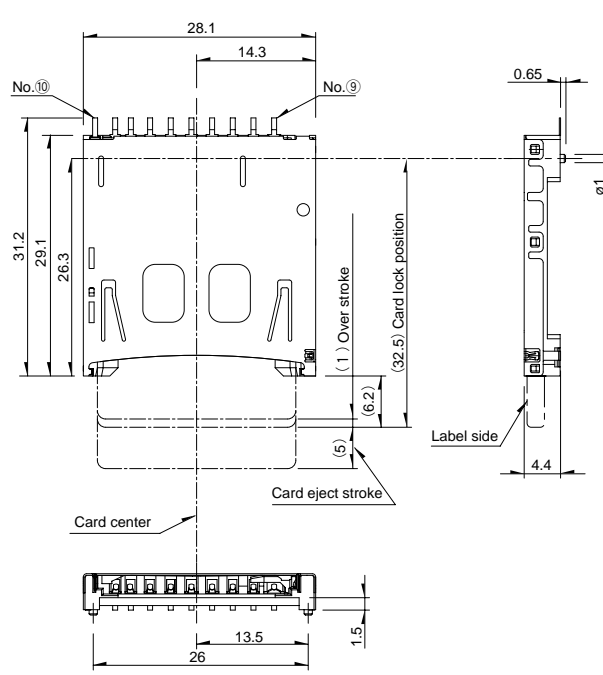
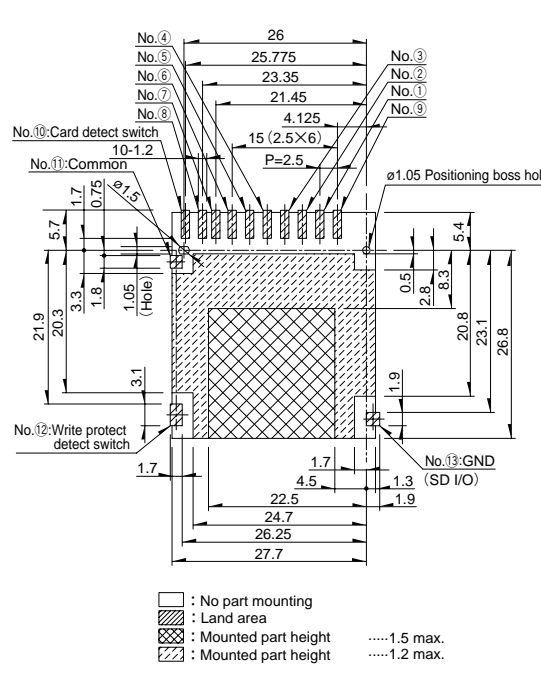
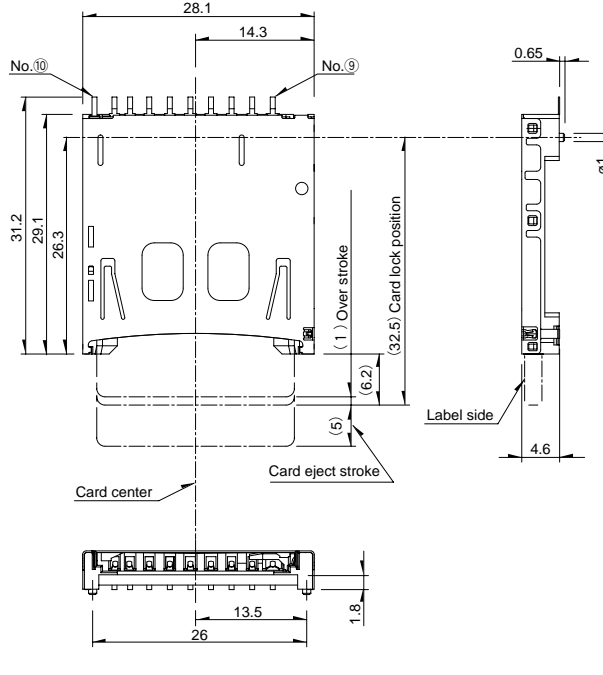
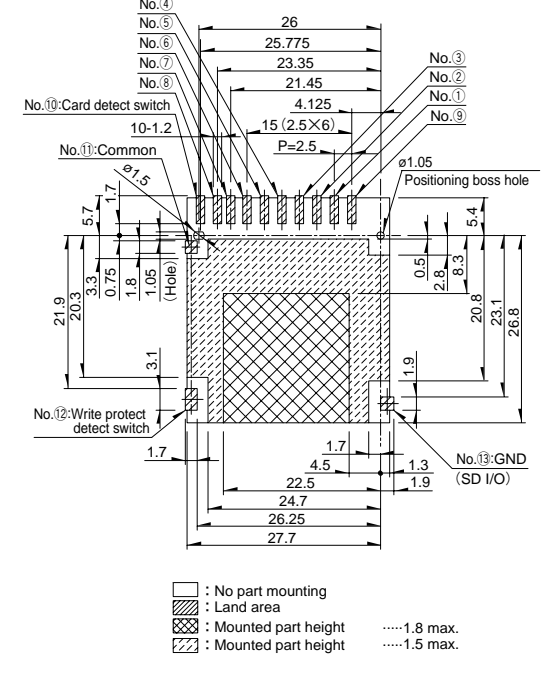
## Dimensions Standard mount

Unit : mm

No.	Style	PC board mounting dimensions (Viewed from the mounting face side)
1	<b>Stand-off 0mm</b>	
2	<b>Stand-off 1.2mm</b>	

Dimensions  
Standard mount

Unit : mm

No.	Style	PC board mounting dimensions (Viewed from the mounting face side)
3	<p><b>Stand-off 1.5mm</b></p> 	 <p>□ : No part mounting ▨ : Land area ▩ : Mounted part height .....1.5 max. ▧ : Mounted part height .....1.2 max.</p>
4	<p><b>Stand-off 1.8mm</b></p> 	 <p>□ : No part mounting ▨ : Land area ▩ : Mounted part height .....1.8 max. ▧ : Mounted part height .....1.5 max.</p>

## Dimensions Standard mount

Unit : mm

No.	Style	PC board mounting dimensions (Viewed from the mounting face side)
5	<p><b>Stand-off 2.3mm</b></p>	<p> <span style="display:inline-block; width:10px; height:10px; border:1px solid black;"></span> : No part mounting  <span style="display:inline-block; width:10px; height:10px; background: repeating-linear-gradient(45deg, transparent, transparent 2px, black 2px, black 4px);"></span> : Land area  <span style="display:inline-block; width:10px; height:10px; background: radial-gradient(circle, black 1px, transparent 1px); background-size: 4px 4px;"></span> : Mounted part height .....2.3 max.  <span style="display:inline-block; width:10px; height:10px; background: radial-gradient(circle, black 1px, transparent 1px); background-size: 4px 4px;"></span> : Mounted part height .....1.8 max.         </p>
6	<p><b>Stand-off -0.8mm</b></p>	<p> <span style="display:inline-block; width:10px; height:10px; border:1px solid black;"></span> : No part mounting  <span style="display:inline-block; width:10px; height:10px; background: repeating-linear-gradient(45deg, transparent, transparent 2px, black 2px, black 4px);"></span> : Land area         </p>

Connector for  
SD Memory Card

Connector for  
TransFlash™  
Card

Connector for  
miniSD™ Card

Connector for  
RS-MMC™

Connector for  
Memory Stick Duo™

Connector for  
Memory Stick™

Combine  
Type  
Connectors

Connector for  
Compact Flash™  
Card

IC Card  
Connectors

PC Card  
Connectors

Connector for  
CMOS Camera  
Module

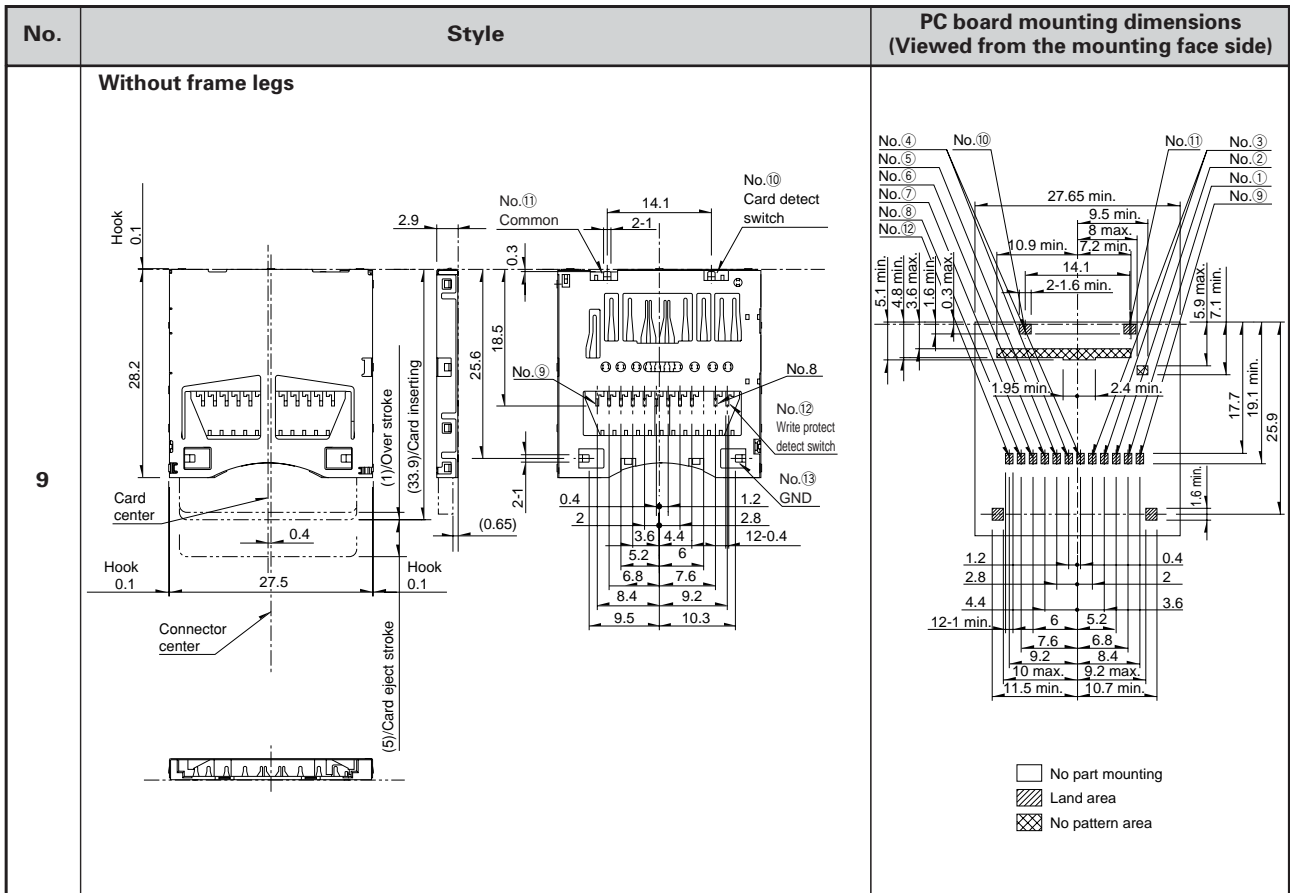
## Dimensions Reverse mount

Unit : mm

No.	Style	PC board mounting dimensions (Viewed from the mounting face side)
7	<b>Stand-off 0mm</b>	
8	<b>Stand-off 1.8mm</b>	

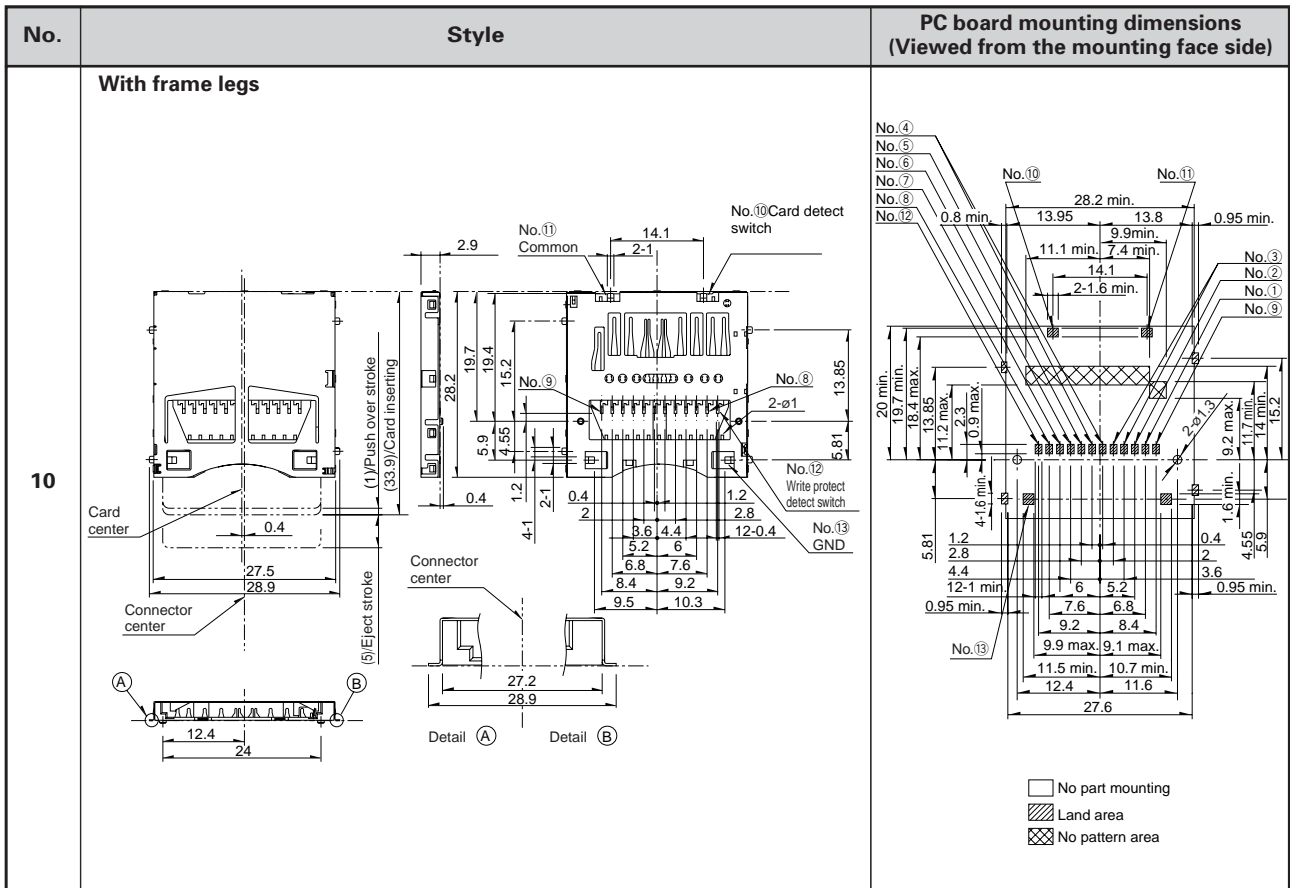
## Dimensions Standard mount (Inner tail)

Unit : mm



## Dimensions Standard mount (Inner tail)

Unit : mm



Connector for  
SD Memory Card

Connector for  
TransFlash™  
Card

Connector for  
miniSD™ Card

Connector for  
RS-MMC™

Connector for  
Memory Stick Duo™

Connector for  
Memory Stick™

Combine  
Type  
Connectors

Connector for  
Compact Flash™  
Card

IC Card  
Connectors

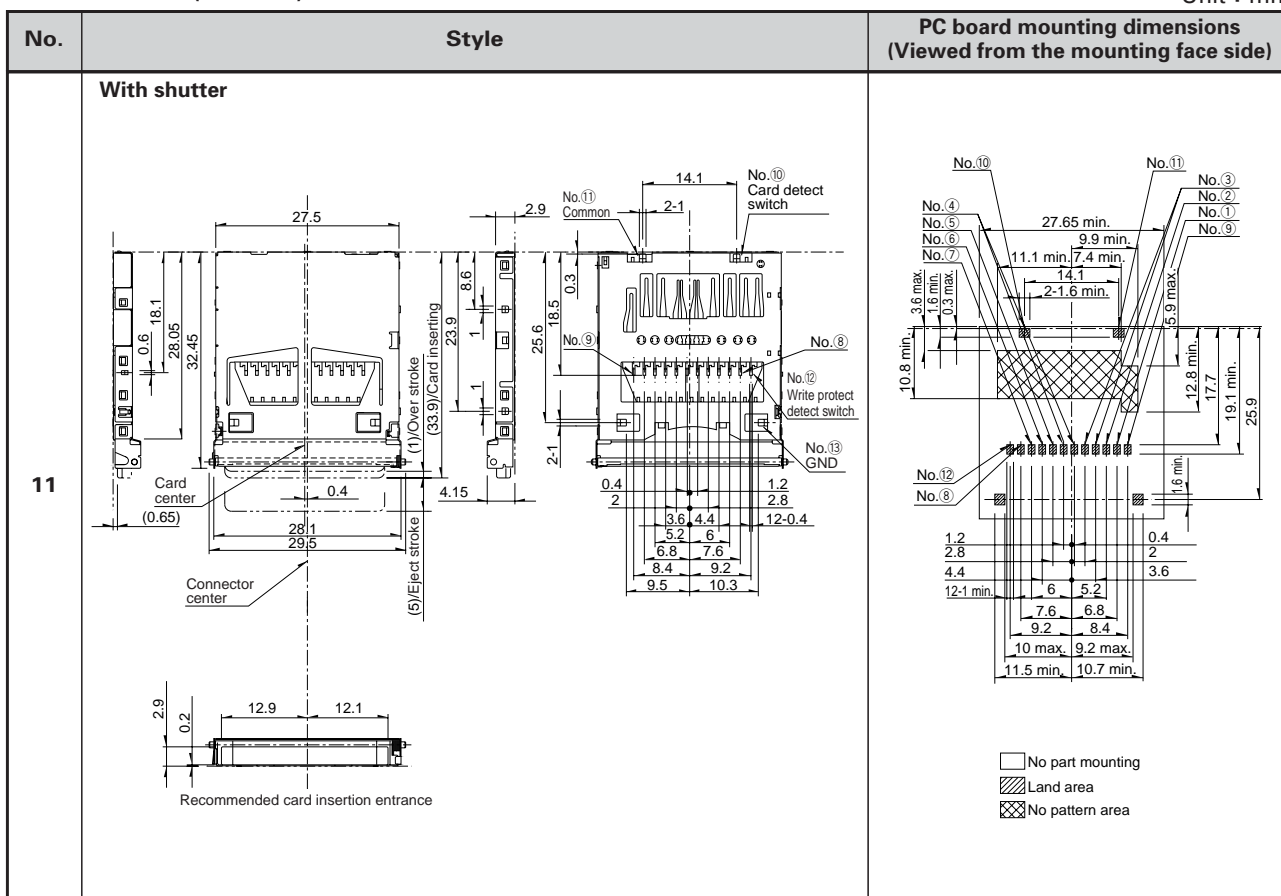
PC Card  
Connectors

Connector for  
CMOS Camera  
Module

## Dimensions

### Standard mount (Inner tail)

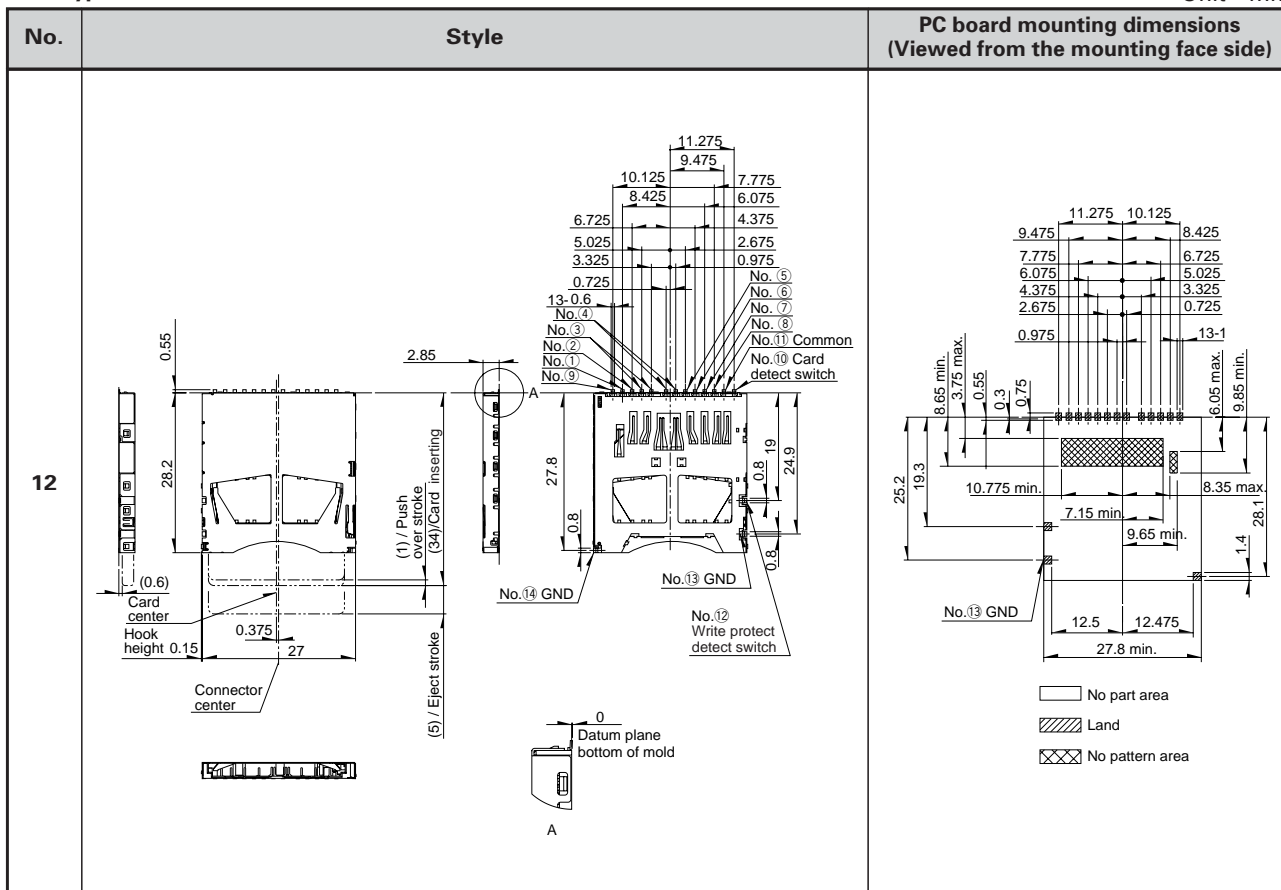
Unit : mm



## Dimensions

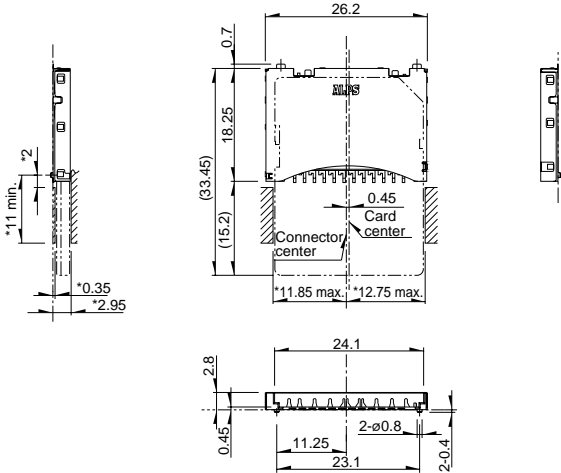
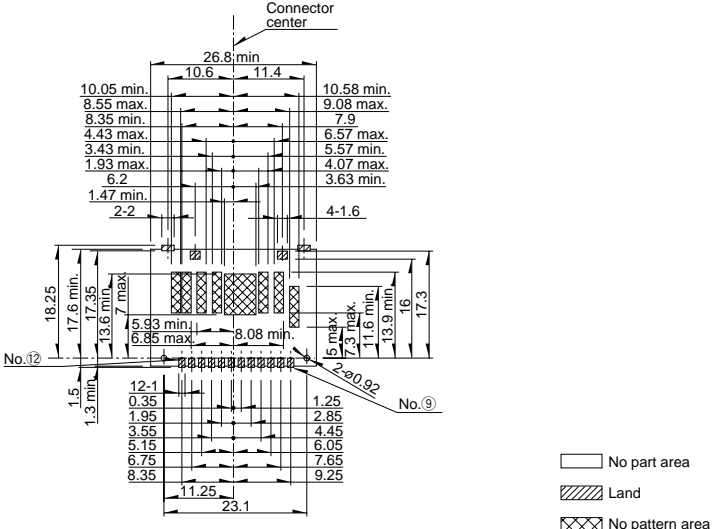
### Slim type

Unit : mm



**Dimensions**  
Header type

Unit : mm

No.	Style
	
13	<p align="center"><b>PC board mounting dimensions (Viewed from the mounting face side)</b></p>
	

Connector for  
SD Memory Card

Connector for  
TransFlash™  
Card

Connector for  
miniSD™ Card

Connector for  
RS-MMC™

Connector for  
Memory Stick Duo™

Connector for  
Memory Stick™

Combine  
Type  
Connectors

Connector for  
Compact Flash™  
Card

IC Card  
Connectors

PC Card  
Connectors

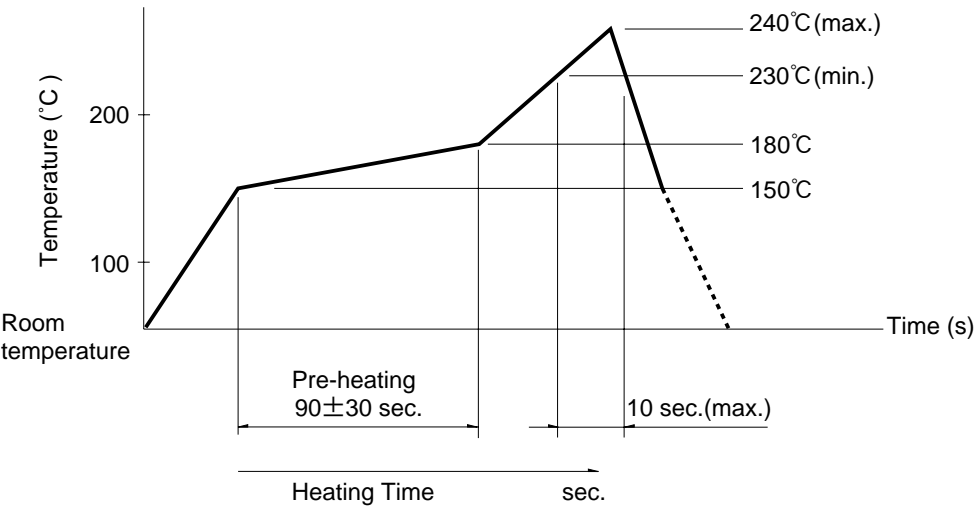
Connector for  
CMOS Camera  
Module



## Soldering Conditions

### Example of Reflow Soldering Condition (Reference)

1. Heating method: Double heating method with infrared heater.
2. Temperature measurement: Thermocouple 0.1 to 0.2 ϕ CA (K) or CC (T) at soldering portion.
3. Temperature profile



## Cautions

1. When soldering terminals, there is a danger that load placed on the terminals may cause rattle, deformation or electrical degradation to occur depending on the conditions. Caution is therefore required.
2. When soldering, do not use water soluble flux because this may corrode the product.
3. Regarding the setting of reflow conditions, please confirm them with the actual mass production conditions.
4. As PC board warping may alter characteristics, please take this into consideration when designing pattern and layout.
5. This product has been designed and manufactured for applications to ordinary electronic equipment and devices such as the AV equipment, electric home applications, office machines and communications equipment, consequently, when employing these products for applications requiring a high degree of safety and reliability such as the medical equipment, aviation and aircraft equipment, space equipment and burglar alarm equipment, the using manufacturers will please thoroughly study the proprieties of these products for the planned applications.

Connector for  
SD Memory Card

Connector for  
TransFlash™  
Card

Connector for  
miniSD™ Card

Connector for  
RS-MMC™

Connector for  
Memory Stick Duo™

Connector for  
Memory Stick™

Combine  
Type  
Connectors

Connector for  
Compact Flash™  
Card

IC Card  
Connectors

PC Card  
Connectors

Connector for  
CMOS Camera  
Module